

INSTRUCTIONS FOR OPERATION AND CARE OF



Whitehall **WHIRLPOOL**

SINCE 1946

EXCELLENCE IN HYDROTHERAPY
(Mobile Whirlpool)



P-10-M-SDP



H-105-M



Whitehall Manufacturing[®]
Manufacturer of Healthcare and Rehabilitation Products since 1946

P.O. Box 3527 • City of Industry, CA, 91744-0527, U.S.A.

800-782-7706 • 626-968-6681 • www.whitehallmfg.com

WARNING



PLEASE READ THIS ENTIRE
BOOKLET BEFORE OPERATING
YOUR NEW WHIRLPOOL



Failure to follow these instructions could result in damage
to your new whirlpool and/or bodily injury

Waste Electrical and Electronic Equipment (WEEE)



This symbol on the product or on its packaging indicates that this product must not be disposed of with regular waste. Instead, it is the user's responsibility to dispose of waste equipment according to the local laws. Separate collection and recycling of the waste equipment at the time of disposal will help conserve natural resources and ensure it is recycled in a manner that protects human health and the environment. For information about where the user can drop off the waste equipment for recycling, please contact your local waste collection authority.

General Warning or Caution

The Exclamation Symbol appears in Warning and Caution statements. This symbol designates where personal injury or damage to the equipment is possible.

Electric Shock

The Electric Shock Symbol is used to indicate a hazard arising from dangerous voltage. Any mishandling could result in irreparable damage to the equipment and/or personal injury or death.

Hot Surface

This symbol is used to indicate a hot surface and to avoid prolonged contact with indicated surface.

Refer To Installation Manual

This symbol means refer to installation manual prior to performing any installation, operation or maintenance.

The Sine Wave

This symbol on the label indicates the turbine motor operates on alternating current at the listed cycles.

Figure of a Person

This image on the label indicates that the turbine contains a pump impeller, meeting definition of Type B Applied Part.



WARNING

To avoid electric shock, connect the turbine power cord to properly earth-grounded, GFCI protected, 3-prong receptacles only. Failure to observe this precaution can result in severe injury.

- WHIRLPOOLS intended for professional use only.
- 230v WHIRLPOOLS for export only.
- DO NOT operate appliance without properly filling tub with water. Under no conditions should the appliance be operated without water. Fill tub with water to the prescribed level before plugging turbine into an electrical receptacle. Operating the appliance without water may result in damage to the motor.
- IMPROPER USE of the whirlpool can cause injury. Use the whirlpool only for the purpose described in this manual.
- THE TURBINE is top-heavy. Improper handling can cause injury or damage. Handle the turbine with care.
- ATTACHING IMPROPER items to the whirlpool can cause injury to persons and damage to equipment. Use only Whitehall approved items on the whirlpools.
- INCORRECT PARTS and service can cause injury to persons and damage equipment. Use **only** Whitehall parts and Whitehall approved service on turbines. Contact Whitehall Customer Service.



Table of Contents

Warning	Page a
Table of Contents	Page 1
General Knowledge	Page 2
Operating Skills & Training	Page 2
Patient Evaluation	Page 2
Inspecting Whirlpool	Page 2
Using The Whirlpool	Page 3
Installation & Operation	Page 4
Repair Parts and Replacement Turbines.....	Pages 5-11
Mobile Motor/Turbine Assembly	Page 5
Parts List.....	Page 6
Motor Raising & Lowering Assembly with Shelf	Page 7
Motor Raising & Lowering Assembly No Shelf	Page 8
Drain Assembly.....	Page 9
Casters	Page 10
Thermometers	Page 11
-SDP Separate Drain Pump Installation & Operation.....	Page 12
-SDP Separate Drain Pump Repair Parts	Page 13
-SDP Separate Drain Pump Repair Parts List.....	Page 14
Cleaning & Disinfecting	Page 15
Care & Cleaning	Page 16
Maintenance & Troubleshooting.....	Page 17
Motor Information	Page 18



OPERATOR SKILLS AND TRAINING

Skills:

Operators using the whirlpool tub/turbine set need:

- A working knowledge of aquatic physical-therapy procedures.
- The ability to assist the patient.

WARNING

Untrained operators can cause injury or be injured. Only trained personnel should operate the whirlpool.

TRAINING

Operator trainees need to:

- Be trained in hydrotherapy protocols.
- Be familiar with the types of patients who should or should not receive this type of physical therapy (see Patient Evaluation below).
- Read and understand this manual for the tub/turbine combination.
- Be trained on the use of the whirlpool and turbine.
- Become familiar with the use of the whirlpool (tub and turbine) before using with patient.

PATIENT EVALUATION

Require Each Patient To Be Evaluated

Patients who are electrically-susceptible (patients with exposed, non-waterproof electric leads, monitors, etc.), patients carrying infectious disease, or patients with certain other medical, mental or physical conditions should not receive treatment with the whirlpool.

The trained operator must evaluate and verify that each patient is suitable for hydrotherapy treatment before permitting the patient to begin hydrotherapy. If in doubt, consult a medical professional before providing hydrotherapy treatment.

WARNING

Certain medical conditions are incompatible with hydrotherapy. The trained operator is responsible for determining each user's suitability for hydrotherapy before beginning treatment.

Important

BLOOD-BORNE DISEASE NOTICE: To reduce the risk of exposure to blood-borne diseases such as HIV-1 and hepatitis when using the whirlpool, thoroughly read and follow the disinfecting and cleaning instructions in this manual.

INSPECTING THE WHIRLPOOL TUB AND TURBINE

This Whitehall product has been carefully packaged at the factory to minimize the possibility of damage during shipping.

- Inspect the packaging for external signs of damage.
- Inspect the contents for damage.

If there is visible damage to the instrument upon receipt, inform the shipping company and Whitehall immediately.

WARNING

Do not attempt to operate this equipment if there is evidence of shipping damage or you suspect the unit is damaged. Damaged equipment may present additional hazards to you. Contact Whitehall technical support for advice before attempting to plug in and operate damaged equipment.

Have your facility's equipment maintenance personnel inspect the whirlpool regularly. Follow the checklist at right and operate the whirlpool device through all its functions as described in this manual.

Inspection Checklist

- Are all components present?
- Does the turbine mount securely in place?
- Is a properly-grounded and voltage-matched hospital grade receptacle available for the turbine?
- Is the outlet equipped with a functioning GFCI (or RCD) Residual-Current Device?
- Is the turbine located close enough to the electrical outlet to prevent cord interference?
- Can the turbine be raised, lowered and locked at the desired height?
- Does the drain valve open and close properly?
- Is the thermometer present and is it legible?
- Do the installed accessories operate without interfering with tub use or turbine operation?



USING THE WHIRLPOOL

Device Intended Use:

Whitehall Whirlpool turbines are intended to provide clinical, physical hydro-massage treatment within a fluid medium, mounted in a tank of a size and shape as deemed effective and determined by a medical professional.

Before Placing the Whirlpool Tub and Turbine Combination In Service:

Operators using the whirlpool need:

- To read and understand the information in this manual.
- To have a plumbing professional install the whirlpool as instructed in *Installing the Whirlpool*, page 4. A rough-in drawing is available to assist the installer. Contact Whitehall Customer Service, bottom of page, for any additional information not covered in this manual.
- Confirm that the whirlpool operates properly. See *Inspecting the Whirlpool*, page 2.

General Guidelines for Use:

- Medical advice is beyond the scope of this manual.
- The whirlpool is for professional use only. A minimum of one trained operator is required.
- The trained operator must evaluate and verify that the patient is suitable for hydrotherapy treatment before beginning hydrotherapy with the whirlpool. See *Patient Evaluation*, page 2.
- Follow your state and local hydrotherapy procedures and, if the patient has one, the physician's order for treatment (see *Patient Evaluation*, page 2).
- Stay with patient at all times.
- It is the operator's responsibility to ensure safe practices for the patient and themselves.
- Turbine precautions:
 - Plug the turbine cord only into a receptacle that is voltage-matched, properly grounded and polarized. Verify that the receptacle has GFCI protection.
- Cord plug is disconnect device. Always maintain clear access to this connection after installation.
- Keep patient hair, gown strings and other loose items away from the impeller housing to avoid entanglement and injury.
- Keep the area around the tub clear a minimum of 12" (305mm) of clearance.

General Guidelines for Use: (Continued)

- Avoid prolonged contact with the motor cover, as elevated temperatures can cause discomfort.
- Normal Operating Conditions:
 - Temperature range between 50° and 93°F (10° and 35°C).
- Relative humidity 5 to 95% and atmospheric pressure sea level to 3,000 meters during use.

Transportation and Storage Conditions:

- Temperature Range should remain between 32° and 110°F (0° and 43°C)
- Relative Humidity Range: 5 to 95%.
- Room Atmospheric Pressure sea level to 3,000 meters.
- Prior to unpacking, when new, tipping has no effect. However, after assembly, the equipment should remain upright, as tipping or inversion may cause damage from components coming loose.

WARNING

Certain medical conditions are incompatible with hydrotherapy. The trained operator is responsible for determining each user's suitability for hydrotherapy before beginning treatment.

Improper operation can cause injury. Operate the whirlpool only as described in this manual.

An unattended patient can be injured. Stay with patient at all times.

Loose items such as gown straps or gauze can be pulled into the turbine impeller and cause injury. Keep loose items away from the turbine impeller housing.

Important

Communicate with patient at all times. When the turbine is used, tell the patient before starting or stopping the turbine and before changing the water or aeration level.

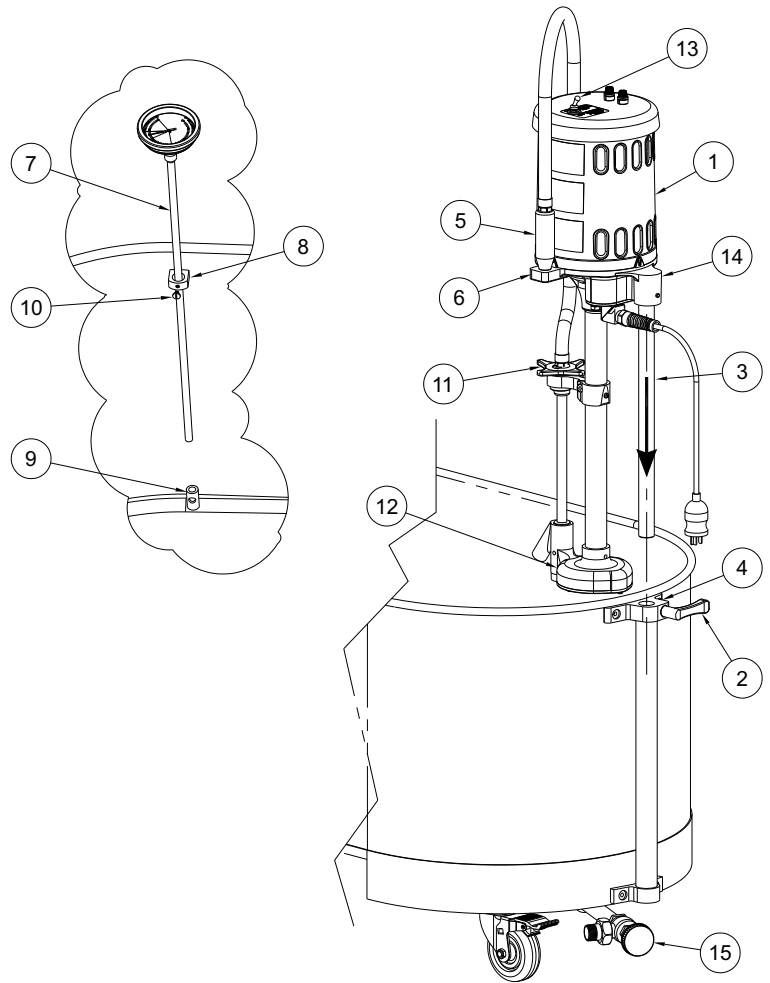


NOTE: THESE INSTALLATION INSTRUCTIONS ARE USED FOR ALL WHITEHALL AND -SL MODELS 27 GALLONS OR MORE.

REFERENCE DRAWINGS	
ASSEMBLIES	PAGE NUMBER
MOTOR/TURBINE	5/6
RAISING/LOWERING/NO SHELF	7
RAISING/LOWERING/SHELF/LG	8
DRAIN ELBOW/VALVE	9
CASTERS	10
THERMOMETER	11

ASSEMBLY PROCEDURE:

- A- TO INSTALL MOTOR/TURBINE ASSEMBLY (1), LOOSEN HANDLE (2) AND ALIGN AND ENGAGE MOTOR SUPPORT ROD (3) WITH RAISING AND LOWERING ASSEMBLY (4). TIGHTEN LEVER HANDLE (2). NOTE: INTERNAL BUSHING MAY NEED ADJUSTING.
- B- PLACE DISCHARGE NOZZLE (5) INTO STORAGE SOCKET (6) PROVIDED.
- C- TO INSTALL THERMOMETER; THREAD SENSING ROD (7) THRU UPPER BRACKET (8) AND INTO LOWER BRACKET (9) BEFORE TIGHTENING SCREW (10).
- D- TURN THE PRESSURE CONTROL VALVE HANDLE (11) FULLY CLOCKWISE, THEN FULLY COUNTERCLOCKWISE TO COMPLETELY LUBRICATE THE PLUNGER ASSEMBLY.
- E- PROVIDE ELECTRICAL SERVICE AND PROPERLY INSTALLED, GROUND FAULT CIRCUIT INTERRUPTER (GFCI) FOR MOTOR SPECIFIED. MOTOR SPECIFICATIONS AVAILABLE ARE EITHER 120V AC / 60 HZ ON 15A CIRCUIT OR 240 V AC / 50 HZ ON 10A CIRCUIT.



⚠ WARNING

Turbine assembly is provided with a 3-way plug. The third prong functions as a built-in ground and must be plugged into a matching grounded GFCI receptacle to properly ground the product.

OPERATION:

- A- FILL TUB AS DESIRED USING FILLER HOSE BY OTHERS. WATER LEVEL SHOULD BE A MAXIMUM OF 4" BELOW THE AND A MINIMUM OF 6" ABOVE BOTTOM OF PUMP (12) .
- B- TURN THE PRESSURE CONTROL VALVE HANDLE (11) FULLY CLOCKWISE. THIS PROVIDES MAXIMUM PRESSURE AND AGITATION.
- C- TURN ON THE SWITCH (13).
- D- ADJUST RAISING AND LOWERING ASSEMBLY (4) BY SLOWLY PUSHING DOWN ON THE TOP OF THE MOTOR SUPPORT CASTING (14) UNTIL THE PUMP (12) IS AT THE DESIRED LOCATION AND TIGHTEN HANDLE (2) TO LOCK IN PLACE.

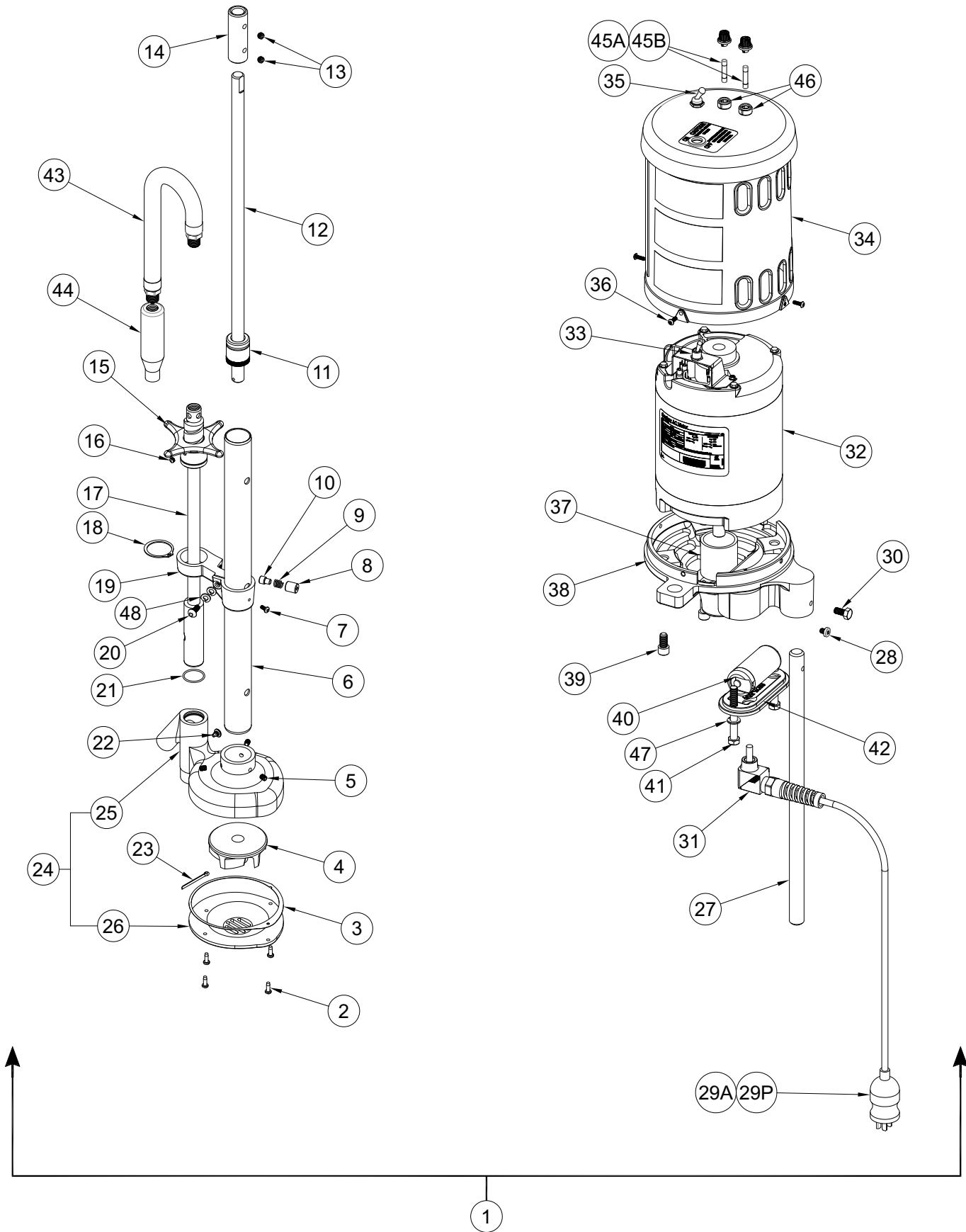
- E- ADJUST PRESSURE CONTROL VALVE HANDLE (11) TO DELIVER DESIRED LEVEL OF AGITATION AND PRESSURE.

DRAINING PROCEDURE:

- A- IF A FLOOR DRAIN IS AVAILABLE USE THE DRAIN VALVE (15) LOCATED AT THE BOTTOM OF THE TUB.
- B- IF EMPTYING INTO A SINK, ROTATE PRESSURE CONTROL VALVE HANDLE (11) COUNTER-CLOCKWISE, LOWER THE PUMP (12) TO THE BOTTOM OF THE TUB. PLACE DISCHARGE NOZZLE (5) INTO SINK, TURN ON SWITCH (13) (NOTE: WHEN WATER STOPS DISCHARGING FROM THE NOZZLE, TURN OFF THE SWITCH). DRAIN RESIDUAL WATER USING DRAIN VALVE (15) OR DRY SPONGE.



SEE PAGE 6 FOR PART DESCRIPTION





THESE REPLACEMENT TURBINES ARE USED FOR THE FOLLOWING MODEL NUMBERS:

WHITEHALL MODEL NUMBERS	REPLACEMENT TURBINE ASSEMBLY	WHITEHALL MODEL NUMBERS	REPLACEMENT TURBINE ASSEMBLY	
E-15-M	TA-15-M-T1	L-75-M	TA-18-M-T1-RS2	
E-22-M	TA-18-M-T1-RS1	L-90-M		
E-27-M	TA-21-M-T1	L-105-M		
E-36-M	TA-25-M-T1	P-10-M	TA-12-M-T1	
E-45-M			P-15-M	TA-15-M-T1
H-60-M	TA-28-M-T1	P-22-M	TA-18-M-T1-RS1	
H-75-M			S-85-M	TA-25-M-T1
H-90-M			S-90-M	
H-105-M			S-110-M	
			SB-100-M	TA-21-M-T1

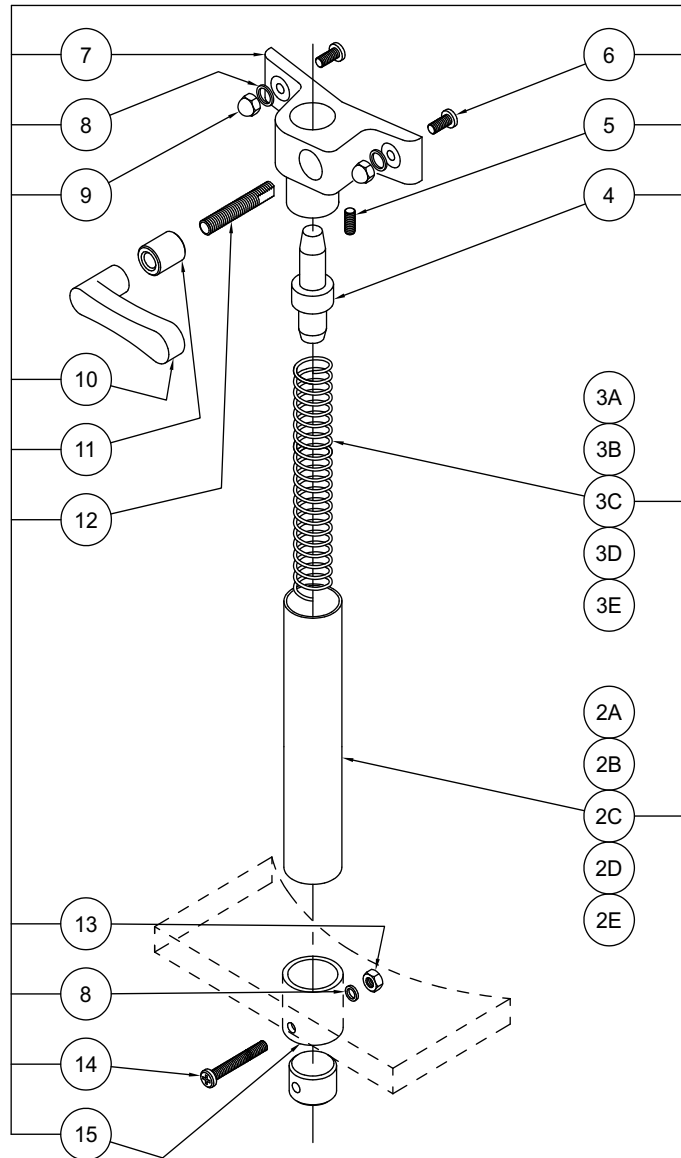
		SPECIFY MODEL
1	COMPLETE TURBINE ASSEMBLY	
6	IMPELLER SHAFT HOUSING TUBE	
12	IMPELLER SHAFT	
17	PLUNGER ASSEMBLY	
27	RAISING & LOWERING ROD	
32	1/2 HP TURBINE MOTOR	
38	MOTOR BASE	

ITEM	PART NUMBER	DESCRIPTION	ITEM	PART NUMBER	DESCRIPTION
1	SEE CHART	COMPLETE TURBINE ASSEMBLY	29E	6505-043-001	EUROPEAN POWER CORD, 250VAC
2	6502-307-000	#8-32 x 1/2" PHIL FLAT HD SELF-TAP SCREW	29F	6505-073-001	UK POWER CORD, 230VAC
3	6504-501-199	17" PUMP GASKET	29G	6505-070-001	ISRAEL POWER CORD, 250VAC
4	6525-518-000	TURBINE IMPELLER - PLASTIC	29H	6505-071-001	AUSTRALIAN POWER CORD, 250VAC
5	6502-401-000	1/4"-20 x 5/16" HEX SOCKET SET SCREW	29I	6505-030-003	10 FEET, 115VAC GFI POWER CORD
6	SEE CHART	IMPELLER SHAFT HOUSING TUBE	29J	6505-034-003	DOMESTIC GFI POWER CORD 220VAC
7	6502-300-000	#8-32 x 3/8" PHIL FLAT HD SELF-TAP SCREW	29K	6505-043-003	RUSSIAN POWER CORD, 250VAC
8	6531-112-199	TENSION ADJUSTER	29L	6505-074-003	INDIA/S. AFRICA GFI POWER CORD, 230VAC
9	6531-113-000	SPRING	29M	6505-043-003	EUROPEAN GFI POWER CORD, 250VAC
10	6531-111-199	FRICITION LOCK ROD	29N	6505-073-003	UK GFI POWER CORD, 230VAC
11	6525-514-001	SHAFT BEARING ASSEMBLY	29O	6505-070-003	ISRAEL GFI POWER CORD, 250VAC
12	SEE CHART	IMPELLER SHAFT	29P	6505-071-003	AUSTRALIAN GFI POWER CORD, 250VAC
13	6502-402-000	5/16"-18 x 1/4" HEX SOCKET SET SCREW	30	0206-003-000	5/16"-18 UNC x 5/8" HEX CAP SCREW
14	6525-513-199	SHAFT COUPLING	31	6525-520-001	STRAIN RELIEF ASSEMBLY
15	6525-584-199	HANDLE	32	SEE CHART	1/2 HP TURBINE MOTOR
16	6502-410-000	1/4"-20 x 1/4" DOG SET SCREW	33	6505-025-000	DPST TOGGLE SWITCH
17	SEE CHART	PLUNGER ASSEMBLY	34	6525-605-001	PLASTIC MOTOR COVER ASSEMBLY
18	6502-620-000	1-3/8" RETAINING RING	35	6505-035-000	WATERPROOF TOGGLE SWITCH CAP
19	6525-570-199	AIR RING BRACKET	36	0126-199-000	#8-32 x 3/8 TORX BUTTON HD SCREW
20	6502-042-000	1/4"-20 x 5/8" PHIL PAN HEAD SCREW	37	6525-507-199	COUPLING SLEEVE
21	6504-022-000	O-RING	38	SEE CHART	MOTOR BASE
22	6502-413-000	1/4"-20 x 5/16" DOG SET SCREW	39	6502-452-000	3/8"-16 x 3/4" HEX SOCKET CAP SCREW
23	0341-101-000	COTTER PIN	40	6505-015-001	CAPACITOR ASSEMBLY
24	6525-509-001	PUMP BODY / COVER ASSEMBLY	41	6502-352-000	3/8"-16 x 3" HEX CAP SCREW
25	6525-510-299	PUMP BODY	42	6525-504-199	CAPACITOR COVER
26	6525-509-299	PUMP COVER	43	6525-590-001	DISCHARGE HOSE ASSEMBLY, 36" LONG
27	SEE CHART	RAISING & LOWERING ROD	44	6525-590-199	HOSE END
28	6502-402-000	1/4"-20 x 5/16" PHIL PAN HD SCREW	45A	6525-608-000	1/4" OD- 12.5A - 250VAC FUSE (110VAC TURBINE)
29A	6505-030-000	10 FEET, 115VAC POWER CORD	45B	6525-612-000	1/4" OD- 8A - 250VAC FUSE (220VAC TURBINE)
29B	6505-034-001	DOMESTIC POWER CORD 220VAC	46	6525-607-000	FUSE HOLDER
29C	6505-043-001	RUSSIAN POWER CORD, 250VAC	47	6502-562-000	3/8" LOCK WASHERS
29D	6505-074-001	INDIA/S. AFRICA POWER CORD, 230VAC	48	0337-050-000	1/4" LOCK WASHERS



THESE REPAIR PARTS ARE USED FOR THE FOLLOWING MODEL NUMBERS ONLY:

WHITEHALL MODEL NUMBERS	
E-27-M	H-75-M
E-27-M-SDP	H-75-M-SDP
E-45-M	H-90-M
E-45-M-SDP	H-90-M-SDP
H-60-M	H-105-M
H-60-M-SDP	H-105-M-SDP



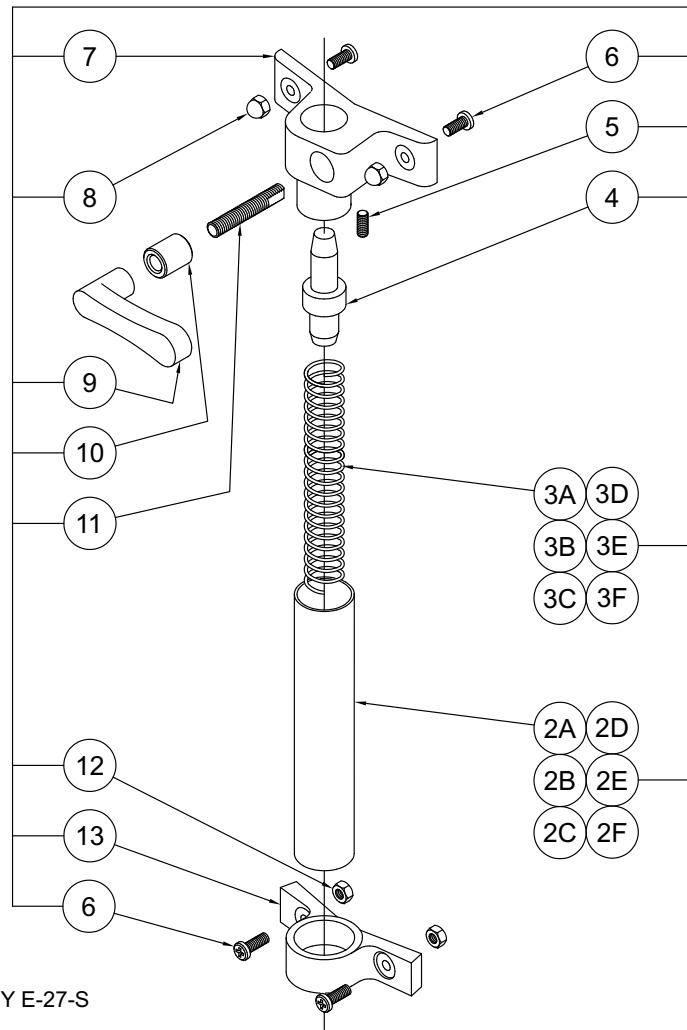
- 1A R & L ASSY E-27-M-SDP
- 1B R & L ASSY E-45-M-SDP
- 1C R & L ASSY H-60/75/90/105-M/SDP

ITEM	PART NUMBER	DESCRIPTION	ITEM	PART NUMBER	DESCRIPTION
1A	6530-230-001	1" DIA. R & L ASSEMBLY - E-27-M-SDP	6	6502-200-000	1/4"-20 x 5/8" TRUSS HEAD PHILLIPS MS
1B	6530-240-001	1" DIA. R & L ASSEMBLY - E-45-M	7	6530-300-199	UPPER BRACKET
1C	6530-250-001	1" DIA. R & L ASSEMBLY - H-60/75/90/105-M	8	6502-561-000	1/4" STAINLESS STEEL LOCKWASHER
2A	6509-270-199	1-3/8" DIA. x 25-3/8" - TUBE - E-27-M-SDP	9	6502-520-000	1/4"-20 HIGH CROWN ACORN NUT
2B	6509-275-199	1-3/8" DIA. x 27-1/4" - TUBE - E-45-M-SDP	10	6530-111-199	HANDLE
2C	6509-280-199	1-3/8" DIA. x 30-1/2" - TUBE - H-60/70/90/105-M	11	6530-112-199	BUSHING
3A	6503-065-000	1-1/8" DIA. x 27" - SPRING - E-27-M-SDP	12	6530-114-199	3/8"-16 UNC STUD
3B	6503-075-000	1-1/8" DIA. x 34" - SPRING - E-45-M-SDP	13	0302-005-000	1/4"-20 HEX NUT
3C	6503-075-000	1-1/8" DIA. x 34" - SPRING - H-60/75/90/105-M	14	6502-105-000	1/4"-20 x 1-1/2" RND HD PHILLIPS MS
4	6530-310-199	END CAP	15	6530-312-199	LOCKING STOP
5	6502-411-000	SET SCREW			



THESE REPAIR PARTS ARE USED FOR THE FOLLOWING MODEL NUMBERS ONLY:

WHITEHALL MODEL NUMBERS	
E-27-S	L-105-M-SDP
E-36-S	L-105-S
E-45-S	L-105-SL
H-60-S	S-85-M
H-75-S	S-85-M-SDP
H-90-S	S-85-S
H-105-S	S-85-SL
L-75-M	S-90-M
L-75-M-SDP	S-90-M-SDP
L-75-SL	S-90-S
L-75-S	S-90-SL
L-90-M	S-110-M
L-90-M-SDP	S-110-M-SDP
L-90-S	S-110-S
L-90-SL	S-110-SL
L-105-M	

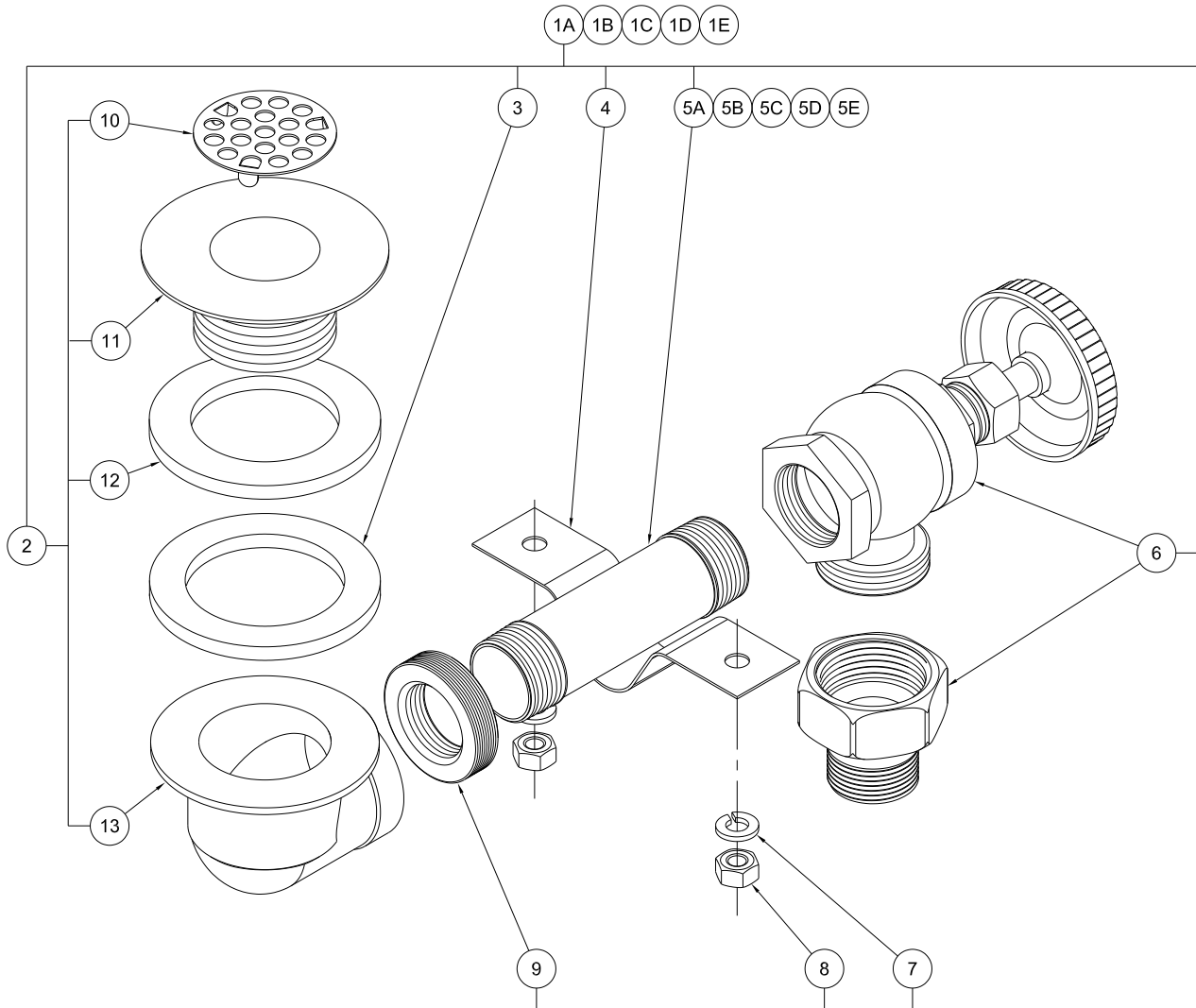


- 1A R & LASSY E-27-S
- 1B R & LASSY E-45-/S-85/90/110-S
- 1C R & LASSY H-60/75/90/105-S
- 1D R & LASSY L-75/90/105-S
- 1E R & LASSY L-75/90/105-M/SL
- 1F R & LASSY H-60/75/90/105-S

ITEM	PART NUMBER	DESCRIPTION	ITEM	PART NUMBER	DESCRIPTION
1A	6530-220-001	1" DIA. R & LASSY - E-27-S	3C	6503-075-000	1-1/8" x 34" SPRING - H-60/75/90/105-S
1B	6530-235-001	1" DIA. R & LASSY - E-45/S-85/90/110-S	3D	6503-060-000	1-3/8" x 23-1/2" SPRING - L-75/90/105-S
1C	6530-245-001	1" DIA. R & LASSY - H-60/75/90/105-S	3E	6503-055-000	1-18" x 19" SPRING - L-75/90/105-M/S
1D	6530-215-001	1" DIA. R & LASSY - L-75/90/105-S	3F	6503-065-000	1-18" x 27" SPRING - S-58/90/110-M/SL
1E	6530-210-001	1" DIA. R & LASSY - L-75/90/105-M/SL	4	6530-310-199	END CAP
1F	6530-225-001	1" DIA. R & LASSY - E-45-SL/S-85/90/110-M/SL	5	6502-411-000	SET SCREW
2A	6509-265-199	1-3/8" DIA. x 23-1/2" TUBE - E-27-S	6	6502-200-000	1/4"-20 x 5/8" TRUSS HEAD PHILLIPS MS
2B	6509-275-199	1-3/8" DIA. x 27-1/4" TUBE - E-45/S-85/90/110-S	7	6530-300-199	UPPER BRACKET
2C	6509-280-199	1-3/8" DIA. x 30-1/2" TUBE - H-60/75/90/105-S	8	6502-520-000	1/4"-20 HIGH CROWN ACORN NUT
2D	6509-260-199	1-3/8" DIA. x 21-1/4" TUBE - L-75/90/105-S	9	6530-111-199	HANDLE
2E	6509-255-199	1-3/8" DIA. x 18-1/2" TUBE - L-75/90/105-M/S	10	6530-112-199	BUSHING
2F	6509-255-199	1-3/8" DIA. x 18-1/2" TUBE - S-85/90/110-M/SL	11	6530-114-199	STUD
3A	6503-265-000	1-1/8" x 23-1/2" SPRING - E-27-S	12	0302-005-000	1/4"-20 HEX NUT
3B	6503-070-000	1-1/8" x 30-1/2" SPRING - E-45/S-85/90/110-S	13	6530-301-199	LOWER BRACKET



COMPLETE ASSEMBLY

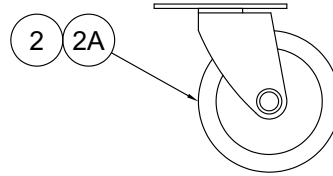
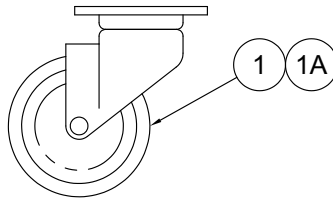


- ①A DRAIN VALVE ASSY FOR: P-10-M/MH/MU, P/E-15-M/MU, E-22-MU, S-85/90-M/SL
- ①B DRAIN VALVE ASSY FOR: P/E-22-M, E-27/45-M
- ①C DRAIN VALVE ASSY FOR: H-60/75/90-M
- ①D DRAIN VALVE ASSY FOR: H-105-M
- ①E DRAIN VALVE ASSY FOR: L-75/90/105-M/SL, S-110-M/SL

ITEM	PART NUMBER	DESCRIPTION	ITEM	PART NUMBER	DESCRIPTION
1A	6508-095-001	DRAIN VALVE ASSEMBLY w/ 3-1/2" NIPPLE	5D	6508-130-000	3/4" NPT PIPE NIPPLE x 8-1/2" LONG
1B	6508-096-001	DRAIN VALVE ASSEMBLY w/ 4-1/2" NIPPLE	5E	6508-132-000	3/4" NPT PIPE NIPPLE x 9-1/2" LONG
1C	6508-097-001	DRAIN VALVE ASSEMBLY w/ 6-1/2" NIPPLE	6	6512-000-000	DRAIN VALVE w/ NPT OUTLET
1D	6508-098-001	DRAIN VALVE ASSEMBLY w/ 8-1/2" NIPPLE	7	0337-050-000	1/4" STAINLESS STEEL LOCKWASHER
1E	6508-099-001	DRAIN VALVE ASSEMBLY w/ 9-1/2" NIPPLE	8	0302-005-000	1/4"-20 UNC STN. STL. HEX NUT
2	6508-060-001	ELBOW & STRAINER ASSEMBLY	9	6508-063-199	1-1/2" ELL TO 3/4" NPT ADAPTER
3	6508-065-000	WASHER	10	6508-061-000	DRAIN STRAINER
4	6508-061-199	PIPE STRAP	11	6508-064-199	TRHEADED DRAIN, CHROME PLATED
5A	6508-115-000	3/4" NPT PIPE NIPPLE x 3-1/2" LONG	12	6508-065-000	WASHER
5B	6508-118-000	3/4" NPT PIPE NIPPLE x 4-1/2" LONG	13	6508-062-000	CAST BRASS ELBOW
5C	6508-124-000	3/4" NPT PIPE NIPPLE x 6-1/2" LONG			

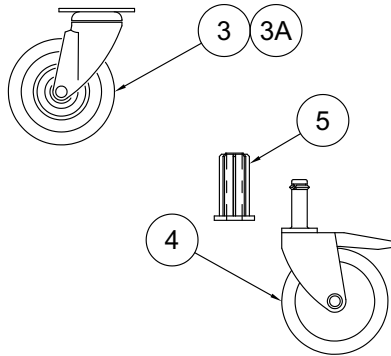


THESE REPAIR PARTS ARE USED FOR THE FOLLOWING MODEL NUMBERS ONLY:	
WHITEHALL MODEL NUMBERS	
H-60-M	L-90-M
H-75-M	L-105-M
H-90-M	S-85-M
H-105-M	S-90-M
L-75-M	S-110-M



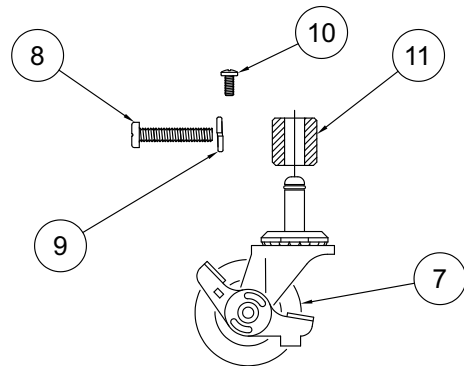
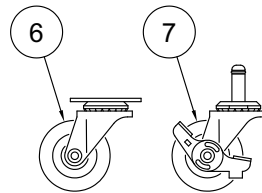
THESE REPAIR PARTS ARE USED FOR THE FOLLOWING MODEL NUMBERS ONLY:	
WHITEHALL MODEL NUMBERS	
E-27-M	E-45-M

THESE REPAIR PARTS ARE USED FOR THE FOLLOWING MODEL NUMBERS ONLY:	
WHITEHALL MODEL NUMBERS	
P-10-M	P-22-M
P-10-MH	E-15-M
P-15-M	E-15-MH
P-15-MH	E-22-M



THESE REPAIR PARTS ARE USED FOR THE FOLLOWING MODEL NUMBERS ONLY:	
WHITEHALL MODEL NUMBERS	
E-22-MU	

THESE REPAIR PARTS ARE USED FOR THE FOLLOWING MODEL NUMBERS ONLY:	
WHITEHALL MODEL NUMBERS	
P-10-MU	E-15-MU
P-15-MU	

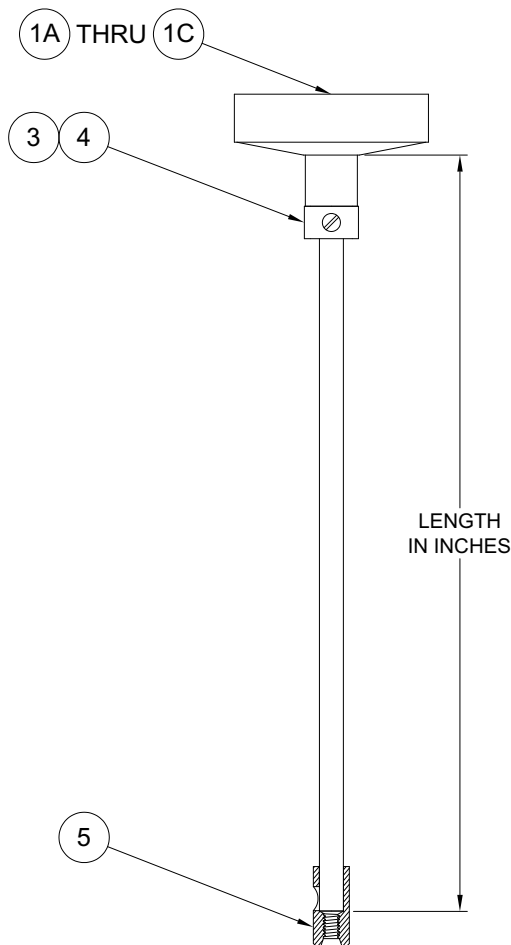
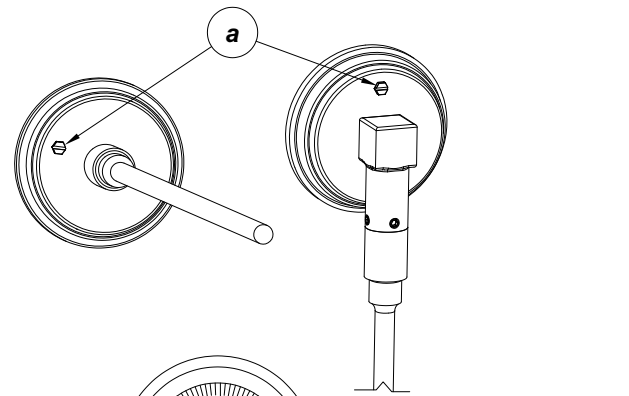


ITEM	PART NUMBER	DESCRIPTION	ITEM	PART NUMBER	DESCRIPTION
1	6507-013-000	4" DIA. HEAVY DUTY CASTER	5	6507-025-000	CASTER TUBE INSERT
1A	6507-063-000	4" DIA. HEAVY DUTY CASTER w/ BRAKE	6	6507-005-000	2" DIA. LIGHT DUTY CASTER
2	6507-003-000	4" DIA. MEDIUM DUTY CASTER	7	6507-002-000	2" DIA. LIGHT DUTY CASTER w/ STEM/BRAKE
2A	6507-053-000	4" DIA. MEDIUM DUTY CASTER w/ BRAKE	8	6502-005-000	1/4"-20 x 1-3/8" UNC RND HEAD SLOT
3	6507-014-000	3" DIA. LIGHT DUTY CASTER	9	0337-050-000	1/4"STAINLESS STEEL LOCKWASHER
3A	6507-064-000	3" DIA. LIGHT DUTY CASTER w/ BRAKE	10	6502-100-000	#8-32 x 3/8" UNC PAN HEAD PHILLIPS
4	6507-050-000	3" DIA. LIGHT DUTY CASTER w/ STEM/BRAKE	11	6520-903-199	TUBING CASTER PLUG

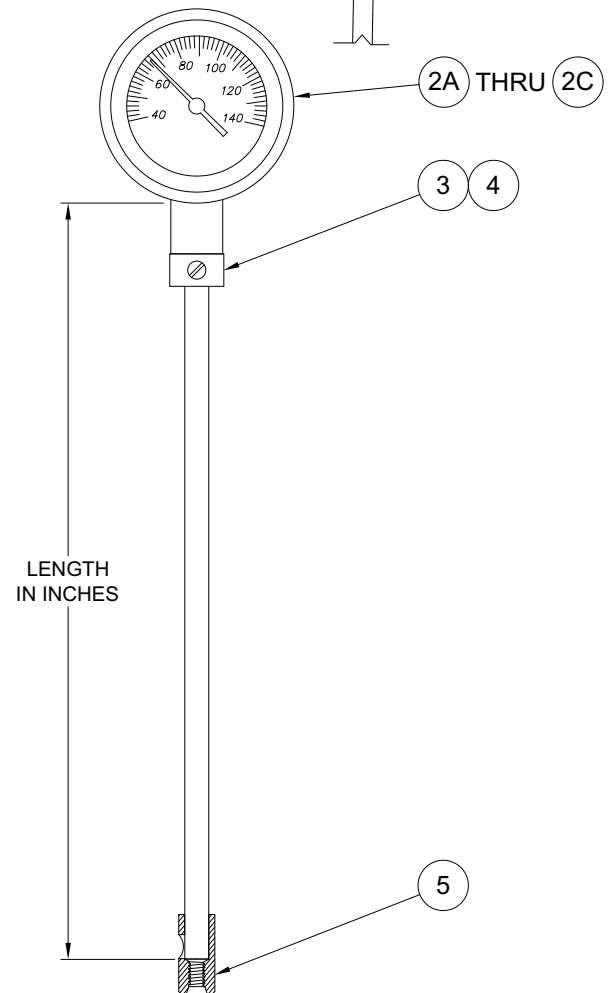


NOTE: THE THERMOMETER GAUGES TEMPERATURES FROM 40° TO 140° F. DO NOT ALLOW TEMPERATURES TO EXCEED 140° TO AVOID DAMAGING THE THERMOMETER.

TO RECALIBRATE: IMMERSE THE STEM A MINIMUM OF 4" INTO THE WATER TURN ON THE TURBINE ASSEMBLY AND ANOTHER ACCURATE TEMPERATURE GAUGE TO COMPARE AND USE THE EXTERNAL ADJUSTMENT SCREW PROVIDED ON THE THERMOMETER CASING AS INDICATED (a).



BACK CONNECTED THERMOMETER
AVAILABLE IN 12", 15" & 18" LENGTHS



BOTTOM CONNECTED THERMOMETER
AVAILABLE IN 21", 25" & 28" LENGTHS

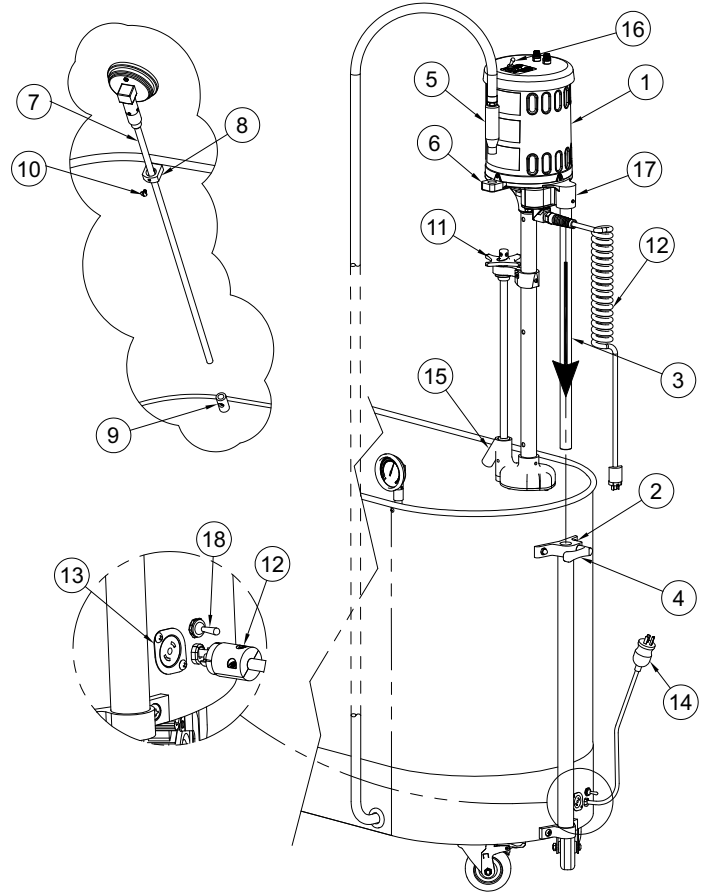
ITEM	PART NUMBER	DESCRIPTION	ITEM	PART NUMBER	DESCRIPTION
1A	6532-005-000	BACK CONNECTED THERMOMETER 12"	2C	6532-080-000	BOTTOM CONNECTED THERMOMETER 28"
1B	6532-010-000	BACK CONNECTED THERMOMETER 15"	3	0116-004-000	#10-32 x 1/4" PHILLIPS ROUGH HEAD SCREW
1C	6532-015-000	BACK CONNECTED THERMOMETER 18"	4	6532-100-199	UPPER THERMOMETER BRACKET
2A	6532-070-000	BOTTOM CONNECTED THERMOMETER 21"	5	6532-101-199	LOWER THERMOMETER BRACKET
2B	6532-075-000	BOTTOM CONNECTED THERMOMETER 25"			



REFERENCE DRAWINGS	
ASSEMBLIES	PAGE NUMBER
MOTOR/TURBINE	5/6
RAISING/LOWERING/NO SHELF	7
RAISING/LOWERING/SHELF/LG	8
DRAIN ELBOW/VALVE	9
CASTERS	10
THERMOMETER	11
-SDP COMPONENTS	13

ASSEMBLY PROCEDURE:

- A- TO INSTALL MOTOR/TURBINE ASSEMBLY ①, LOOSEN HANDLE ② AND ALIGN AND ENGAGE MOTOR SUPPORT ROD ③ WITH RAISING AND LOWERING ASSEMBLY ④. TIGHTEN LEVER HANDLE ②. NOTE: INTERNAL BUSHING MAY NEED ADJUSTING.
- B- PLACE DISCHARGE NOZZLE ⑤ INTO STORAGE SOCKET ⑥ PROVIDED.
- C- TO INSTALL THERMOMETER; THREAD SENSING ROD ⑦ THRU UPPER BRACKET ⑧ AND INTO LOWER BRACKET ⑨ BEFORE TIGHTENING SCREW ⑩.
- D- TURN THE PRESSURE CONTROL VALVE HANDLE ⑪ FULLY CLOCKWISE, THEN FULLY COUNTERCLOCKWISE TO COMPLETELY LUBRICATE THE PLUNGER ASSEMBLY.
- E- INSERT ELECTRICAL CORD TWIST-LOCK PLUG ⑫ INTO SOCKET ⑬ AND TURN CLOCKWISE A QUARTER TURN TO LOCK IN PLACE.
- F- PROVIDE ELECTRICAL SERVICE AND PROPERLY INSTALLED, GROUND FAULT CIRCUIT INTERRUPTER (GFCI) FOR MOTOR SPECIFIED. MOTOR SPECIFICATIONS AVAILABLE ARE EITHER 120V AC / 60 HZ ON 15A CIRCUIT OR 240 V AC / 50 HZ ON 10A CIRCUIT.



- D- ADJUST RAISING AND LOWERING ASSEMBLY ④ BY SLOWLY PUSHING DOWN ON THE TOP OF THE MOTOR SUPPORT CASTING ⑰ UNTIL THE PUMP IS AT THE DESIRED LOCATION AND TIGHTEN HANDLE ② TO LOCK INTO PLACE.
- E- ADJUST PRESSURE CONTROL VALVE ⑪ TO DELIVER DESIRED LEVEL OF AGITATION AND PRESSURE.

⚠ WARNING

Whirlpool drain pump power cord is provided with a 3-way plug. The third prong functions as a built-in ground and must be plugged into a matching grounded GFCI receptacle to properly ground the product.

- G- PLUG IN THE CORD ⑭ FOR THE MOTOR ASSEMBLY ① TO THE RECEPTACLE.

OPERATION:

- A- FILL TUB AS DESIRED USING FILLER HOSE BY OTHERS. WATER LEVEL SHOULD BE A MAXIMUM OF 4" BELOW THE AND A MINIMUM OF 6" ABOVE BOTTOM OF THE PUMP ⑮.
- B- TURN THE PRESSURE CONTROL VALVE HANDLE ⑪ FULLY CLOCKWISE. THIS PROVIDES MAXIMUM PRESSURE AND AGITATION.
- C- TURN ON THE TURBINE TURBINE SWITCH ⑰.

⚠ WARNING

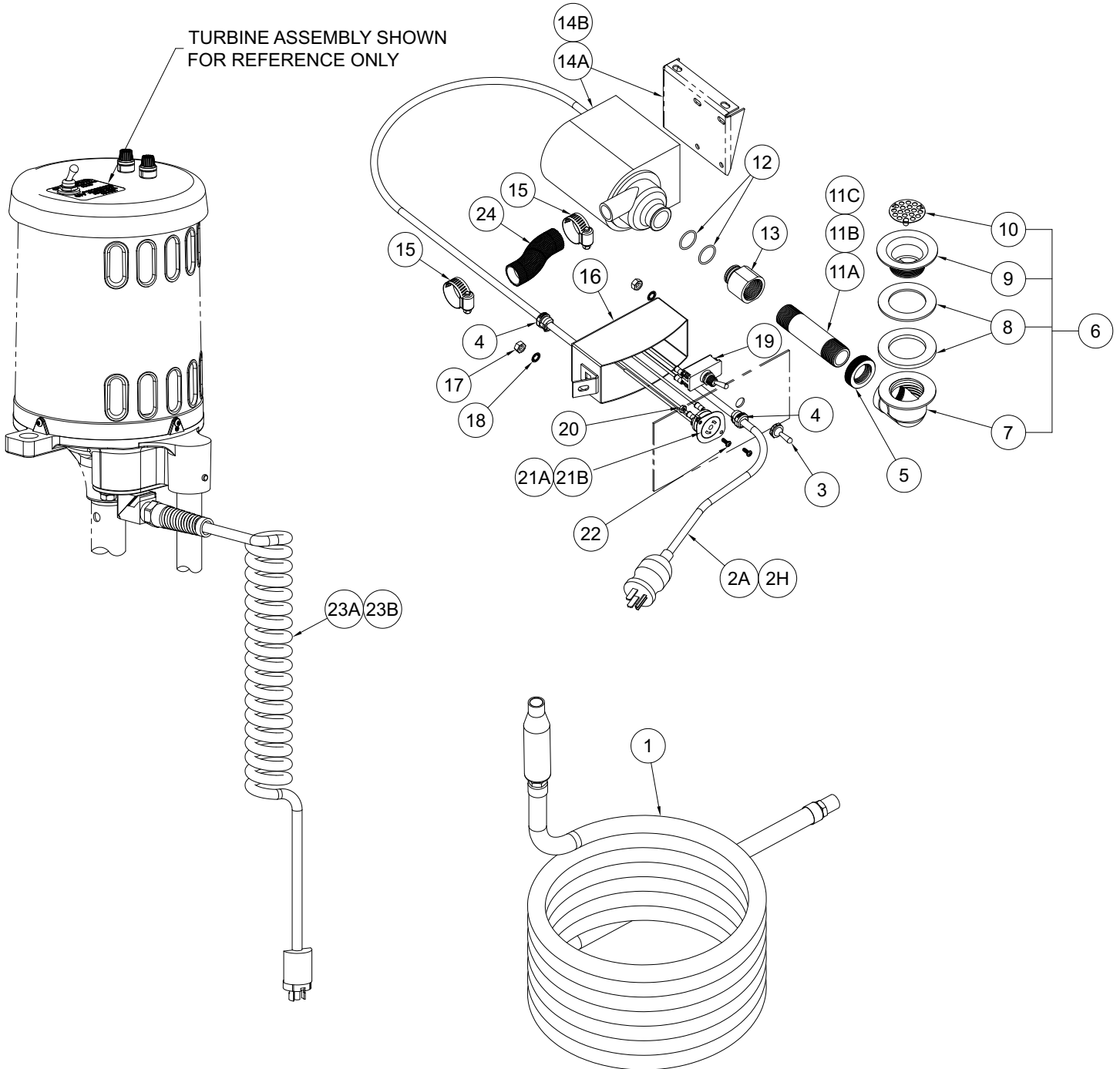
Do not operate the turbine and Separate Drain Pump (-SDP) simultaneously. Will cause increased current load and may result in the turbine running dry, causing damage to the turbine.

DRAINING PROCEDURE:

- A- TURN OFF TURBINE ⑰ BEFORE OPERATING DRAIN PUMP.
- B- PLACE DISCHARGE NOZZLE ⑤ INTO FLOOR DRAIN OR SINK.
- C- TURN ON DRAIN PUMP SWITCH ⑱. NOTE: WHEN WATER STOPS DISCHARGING FROM THE NOZZLE, TURN OFF THE SWITCH.
- D- WHEN DRAINING INTO SINK, ANY RESIDUAL WATER REMAINING MAY BE REMOVED BY SPONGE DRYING.
- E- PLACE DISCHARGE NOZZLE ⑤ INTO SOCKET ⑥.



SEE PAGE 14 FOR PART DESCRIPTION





-SDP (Separate Drain Pump) Parts List

ITEM	MODEL NUMBER
11A	P-10-M-SDP, P-10-MH-SDP, E-15-M-SDP, P-15-M-SDP E-15-MH-SDP, P-15-MH-SDP, E-22-M-SDP, P-22-M-SDP L-105-M-SDP, E-27-M-SDP, E-36-M-SDP, E-45-M-SDP
11B	P-10-MU-SDP, L-75-M-SDP, L-75-SL-SDP, L-90-M-SDP H-60-M-SDP, H-75-M-SDP, H-90-M-SDP, H-105-M-SDP S-85-M-SDP, S-85-SL-SDP, S-90-SL-SDP, S-110-M-SDP S-110-SL-SDP, L-75-SL-SDP, L-90-SL-SDP, E-22-MU-SDP
11C	E-15-MU-SDP, P-15-MU-SDP

ITEM	PART NUMBER	DESCRIPTION	ITEM	PART NUMBER	DESCRIPTION
1	6525-596-001	DRAIN HOSE ASSEMBLY	8	6508-065-000	DRAIN WASHER
2A	6505-030-000	10 FEET, 115VAC POWER CORD	9	6508-064-000	REMOVABLE DRAIN
2B	6505-034-001	DOMESTIC POWER CORD 220VAC	10	6508-061-000	REMOVABLE GRID STRAINER
2C	6505-043-001	RUSSIAN POWER CORD, 250VAC	11A	6531-510-000	3/4" NPT x 2" LONG PCV ADAPTER
2D	6505-074-001	INDIA/S. AFRICA POWER CORD, 230VAC	11B	6531-511-000	3/4" NPT x 4" LONG PCV ADAPTER
2E	6505-043-001	EUROPEAN POWER CORD, 250VAC	11C	6531-512-000	3/4" NPT x 7" LONG PCV ADAPTER
2F	6505-073-001	UK POWER CORD, 230VAC	12	0401-017-000	#17 O-RING
2G	6505-070-001	ISRAEL POWER CORD, 250VAC	13	6531-509-199	OUTLET ADAPTER
2H	6505-071-001	AUSTRALIAN POWER CORD, 250VAC	14A	6531-500-001	PUMP & BRACKET ASSEMBLY, 110VAC
2I	6505-030-003	10 FEET, 115VAC GFI POWER CORD	14B	6531-501-001	PUMP & BRACKET ASSEMBLY, 220VAC
2J	6505-034-003	DOMESTIC GFI POWER CORD 220VAC	15	0358-006-000	HOSE CLAMP, FIT 3/8" OD TO 7/8" OD TUBE
2K	6505-043-003	RUSSIAN GFI POWER CORD, 250VAC	16	6531-520-002	JUNCTION BOX ASSEMBLY
2L	6505-074-003	INDIA/S. AFRICA GFI POWER CORD, 230VAC	17	0302-005-000	1/4"-20 UNC HEX NUT
2M	6505-043-003	EUROPEAN GFI POWER CORD, 250VAC	18	0321-003-000	1/4" INTERNAL TOOTH STAR WASHER
2N	6505-073-003	UK POWER GFI CORD, 230VAC	19	6531-526-001	TOGGLE SWITCH ASSEMBLY
2O	6505-070-003	ISRAEL GFI POWER CORD, 250VAC	20	0304-002-000	#6-32 UNC HEX NUT
2P	6505-071-003	AUSTRALIAN GFI POWER CORD, 250VAC	21A	6531-525-001	FLANGED RECEPTACLE ASSEM, 110VAC
3	6505-035-000	WATERPROOF TOGGLE SWITCH COVER	21B	6531-527-001	FLANGED RECEPTACLE ASSEM, 220VAC
4	6505-520-000	STRAIN RELIEF BUSHING	22	0116-112-000	#6-32 x 3/8" PHILLIPS ROUND HEAD SCREW
5	6508-063-199	1-1/2" to 3/4" ADAPTER	23A	6505-025-000	110VAC 2 PRNG+ GRD SPIRAL POWER CORD
6	6508-060-001	ELBOW & STRAINER ASSEMBLY	23B	6505-120-003	220VAC 3 PRONG SPIRAL POWER CORD
7	6508-062-000	CLOSE ELBOW	24	6506-151-000	CORRUGATED HOSE (CUT TO FIT)



Cleaning and Disinfecting the Whirlpool Tank

After draining the Whirlpool:

1. Verify that the turbine is OFF.
2. Remove any loose objects or debris that may be present in the whirlpool tank.
3. To Disinfect:

*Whitehall recommends that you disinfect the whirlpool after each patient use.

*Spray or wipe all surfaces of the whirlpool tank and thermometer with a hard surface disinfectant, following the disinfectant manufacturer's instructions.

*Rinse away disinfectant residue with warm, clean water. If needed (or after the last patient of the day) wipe the inside and outside surfaces of the whirlpool with a towel to reduce streaking and spotting.

4. To Clean:

*Clean as needed, or weekly at minimum.

*Hand-wash all surfaces of the whirlpool and thermometer with a non-abrasive stainless steel cleaner. Scrub only in the direction of the polish lines on the whirlpool. Follow the manufacturer's instructions for use.

*Rinse with cold water.

*Wipe inside and outside surfaces with a towel to reduce streaks and spotting.

Disinfecting and Cleaning of the Turbine

1. Drain the tank.
2. Place an empty bucket beneath the turbine. Fill with water and add disinfectant solution per manufacturer's recommended use.
3. Ensure the aerator control valve is in the open position.
4. Turn on the turbine for 5 seconds and turn it off. Allow the turbine to soak for a 10 minute contact time.
5. Spray or wipe all exposed surfaces with a mixture of suitable disinfectant solution per manufacturer's recommended use. Exposed surfaces should remain wet for at least 10 minutes.
6. Drain the turbine bucket into the tank and open drain.
7. Rinse all exposed surfaces with warm/hot water.
8. Fill the bucket with clean water and run turbine for five seconds to rinse impeller cavity.

Important

The following chemicals are NOT recommended:

- **Sodium or calcium hypochlorite, chlorine, or bleach:** Chloride ions are a major cause of stainless steel pitting and are highly caustic and corrosive. If used, wear skin, eye and respiratory protection. Immediately rinse off residue.
- **Phenolics:** Phenolics damage metal parts and plastics and distort the water-lubricated hard-rubber bearing in turbine. **DO NOT USE.**
- **Glutaraldehydes:** These chemicals are good disinfectants but poor cleaners. Exposure to vapors is harmful. **DO NOT USE.**
- **Iodines:** Iodines are good disinfectants but poor cleaners. Iodines corrode metal surfaces including stainless steel. If used, wear respiratory protection. Immediately rinse off residue.
- **Alcohol:** Alcohol-based cleaners have limited effectiveness against some common microorganisms. They are also extremely flammable and corrosive. **DO NOT USE.**

Important

Using abrasive compounds or applicators can damage the whirlpool's appearance. Do not use abrasive materials to clean the whirlpool.

**Whitehall recommends the use of Hydrochlor® Whirlpool Antiseptic with all patient treatments. This simplifies cleaning of equipment by eliminating need for repeated rinsing and scrubbing.*



CARE AND CLEANING OF STAINLESS STEEL

NORMAL CLEANING

Clean weekly or more often, as needed (especially high-polish surfaces)

RECOMMENDED CLEANING MATERIALS

- Sponge - natural or artificial
- Nylon or other soft-bristle material brush
- **SOFT** cloth (as used on automobile finishes)

RECOMMENDED CLEANING SOLUTIONS

- Hand dishwashing liquid/soft water solution
- Mild soap/soft water solution
- 3M Stainless Steel Cleaner/Polish
- White vinegar/soft water solution (for brightening, removing oil deposit and hard water deposits)
- CLR Brand Cleaner or baking soda /soft water solution (for brightening, removing hard water deposits)
- Club soda and sponge

To remove smudges and fingerprints:

Wipe surfaces with a quality Stainless Steel Cleaner / Polish. Apply using a soft non-abrasive cloth. Always follow cleaner/polish product directions provided.

To remove dirt and debris:

Wash surfaces with a mild liquid soap. Apply using a soft, non-abrasive cloth. Rinse surfaces thoroughly with clean water. Afterwards, using a soft non-abrasive cloth, wipe surfaces with stainless steel cleaner/polish.

To remove rust stains:

Wipe surfaces with CRES (available through Whitehall) or equivalent cleaner. Use recommended solutions. Apply using a soft non-abrasive sponge. Rinse surfaces thoroughly immediately after application. Always follow cleaner product directions provided. Afterwards, using a soft, non-abrasive cloth, wipe surfaces with stainless steel cleaner/polish.

FOR TOUGH PROBLEMS

- CRES Cleaner specifically for rust stains (Available through Whitehall)
- Tarn-X for general stains
- # 7 chrome polish
- Silver polish

To remove stubborn spots or to treat a scratch (Standard Satin Finish only):

Use of synthetic, abrasive, general-purpose pads such as Scotch Brite® is recommended. Apply the stainless steel cleaner/polish to the synthetic, abrasive pads and.....

Continues.....

Continued:

CAREFULLY rub out spot with cleaner/polish. *Be sure to rub in the direction of the grain!* Do not allow steel wool to come in contact with stainless steel. Steel particles can embed into the stainless steel surface and create rust!

Special Note: After cleaning for serious problems, let dry, and expose to air for at least 24 hours to allow "healing" (restoring of the chromium oxide layer) of the stainless steel surface.

FOR ENVIRO-GLAZE STAINLESS STEEL

Protecting the powder coated surface is the major key in keeping an Whitehall Enviro-Glazed stainless steel product clean and under warranty.

- For normal wipe-down cleaning, a mild soap and a sponge or cotton cloth will perform well.
- Ordinary mild cleaners for home use will sanitize the fixture. (e.g. Soft-Scrub®, Comet Soft Cleanser®, Clorox®, Scrubbing Bubbles® Gel.)
- NEVER use harsh cleansers such as "Kaboom®", Lysol® Gel, Lysol Cling® or "The Works" as these contain powerful acidic or alkaline chemicals which may damage the finish or even the metal of the tank itself. Use of such chemicals will void the warranty.
- NEVER use a metal brush while cleaning. The use of such a tool at any time will scratch the finish and perhaps cause corrosion, voiding the warranty.

THINGS TO AVOID

- Harsh polishing cleanser (Comet, Bon Ami, etc.)
- Harsh chemicals (strong acidic or alkaline materials such as hydrochloric acid, sodium hydroxide, etc.)
- Any abrasive substance (dirt/mud, ceramic items, etc.)
- Chlorinated cleansers, sanitizers or bleach of any kind
- Steel wool, steel utensils or any object made of steel or metal, left in contact with stainless surface (hair pins, paper clips, aerosol cans)
- Scotch-Brite® type pads on high-polished surfaces
- Seawater or excessively hard water
- Salt or salty foods allowed to dry on surface
- Leaving scratches in metal surface (soil can collect in these, preventing surface from "healing")
- Leaving hard water sitting (evaporating) for extended periods, allowing mineral deposits to collect.



Maintenance Schedule

The whirlpool requires regular maintenance. Set up and follow a maintenance schedule. The table at below right represents minimum intervals for maintenance.

When using maintenance products, follow the manufacturers' directions and read the manufacturer's SDS, Safety Data Sheets. You can purchase a recommended disinfectant from Whitehall Customer Service (Back of Manual) or your Whitehall distributor.

Maintenance Procedures

Turbine:

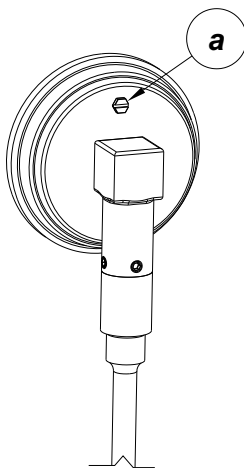
Motors are equipped with sealed greased ball bearings that do not require lubrication. Vent holes in the motor cover shell must be cleaned periodically to allow free air flow and prevent overheating.

Hard Water:

The mineral properties of hard water, if allowed to build up over a period of time, have the potential for creating damage to the moving parts of the turbine assembly. We recommend the installation of a water softener or if that is not possible, the use of a water softening agent.

Note: The thermometer gauges temperatures from 40° to 140° F. Do not allow temperatures to exceed 140° to avoid damaging the thermometer.

To recalibrate: Immerse the stem a minimum of 4" into the water turn on the turbine assembly and another accurate temperature gauge to compare and use the external adjustment screw provided (a) on the thermometer casing as indicated.



Troubleshooting

When there is a significant loss in pressure at the turbine assembly:

- Check water inlet holes underneath the pump, clean away any foreign material.
- Add water, pump body must be completely submerged.

Turbine does not start when switch is turned on:

- Check your power source.
- Have a qualified technician check switch, fuses, GFI Cord and main circuit.

Turbine ceases operation:

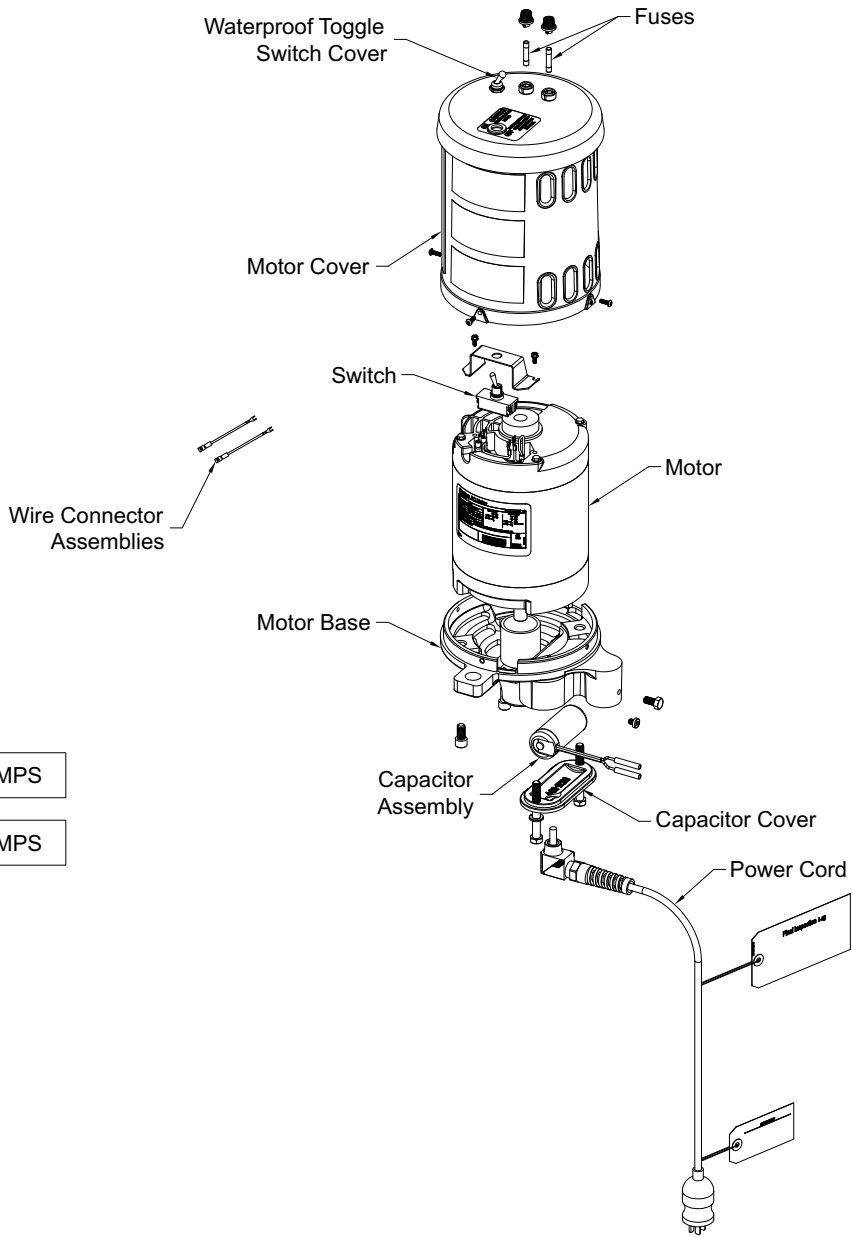
- Check for motor overloads: Possible causes are:
 - A- Blocked motor ventilation holes
 - B- Excessive current load

NOTE: The motor is equipped with a thermal overload protector. In an overheated condition, the motor will automatically shut off until it has returned to a normal operating temperature, then resume operation.

Minimum Maintenance Intervals	Each Use	As Needed	Each Week	Each Month
Disinfecting (page 17)	●			
Cleaning (page 18)		●	●	
Inspecting (page 2)		●		●



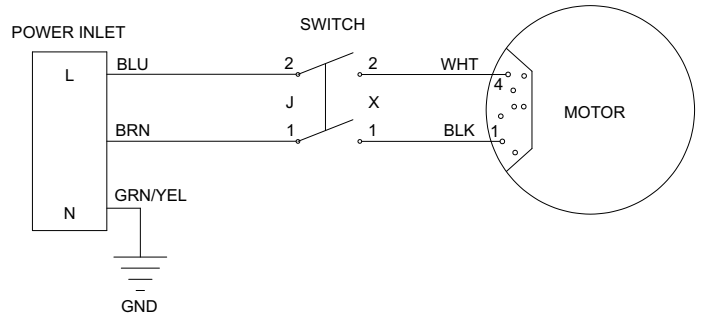
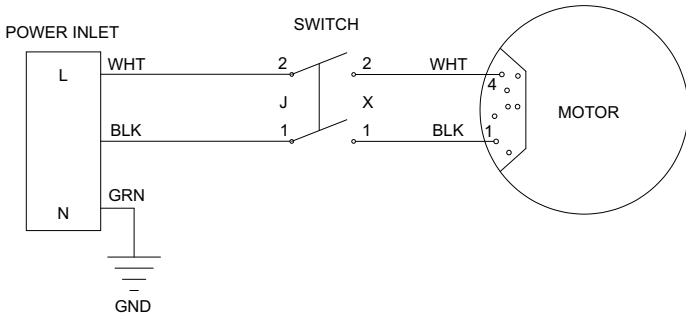
MOTOR DISASSEMBLY



220VAC - 50 / 60 Hz	3.5 AMPS
---------------------	----------

110VAC - 50 / 60 Hz	6.9 AMPS
---------------------	----------

FUSES	
110VAC	12.5A / 250VAC
220VAC	8A / 250VAC





Whitehall Manufacturing®
Manufacturer of Healthcare and Rehabilitation Products since 1946

Mailing Address:

P.O. Box 3527 • City of Industry, CA 91744-0527 U.S.A

Physical Address:

15125 Proctor Avenue • City of Industry, CA 91746 U.S.A

Phone 800-782-7706 • 626-968-6681

Fax 626-855-4862

Web: www.whitehallmfg.com

E-mail: info@whitehallmfg.com

Any questions regarding servicing of products in Europe or the Middle East should be directed to:
Acorn Powell, Limited • 5 Brearley Court, Baird Road Quedgeley, Gloucester GL2 2AF, United Kingdom
Phone (44) 01452 721211 • Fax (44) 01452 721231
Web www.acornpowell.co.uk
technicalsupport@acornpowell.co.uk

MANUFACTURER'S WARRANTY

Go to www.whitehallmfg.com to fill out eWarranty Registration, keyword search: WARRANTY.

Whitehall Manufacturing Company warrants that its products are free from defects in material or workmanship under normal use and service for a period of one year from date of shipment. Whitehall's liability under this warranty shall be discharged solely by replacement or repair of defective material, provided Whitehall is notified in writing within one year from date of shipment, F.O.B. Industry, California.

This warranty does not cover installation or labor charges, and does not apply to materials which have been damaged by other causes such as mishandling or improper care or abnormal use. The repair or replacement of the defective materials shall constitute the sole remedy of the Buyer and the sole remedy of Whitehall under this warranty. Whitehall shall not be liable under any circumstances for incidental, consequential or direct charges caused by defects in the materials, or any delay in the repair or replacement thereof. This warranty is in lieu of all other warranties expressed or implied. Product maintenance instructions are issued with each fixture, and disregard or non-compliance with these instructions will constitute an abnormal use condition and void the warranty. Stainless steel must be properly maintained after the water has been introduced into the fixture, or Whitehall's limited warranty is void. If you have any questions or require technical assistance, please call 800-743-8219.

NOTICE TO KEEP ORIGINAL PACKAGING- Regarding warranty claims: customer must retain original packaging for one year upon receipt of product. If packaging is discarded, it is the customer's responsibility to provide adequate packaging. Any shipping claims that are a direct result of customer-provided packaging materials will be handled by the shipper.